

Eureka

Corrugated Conduit Packs

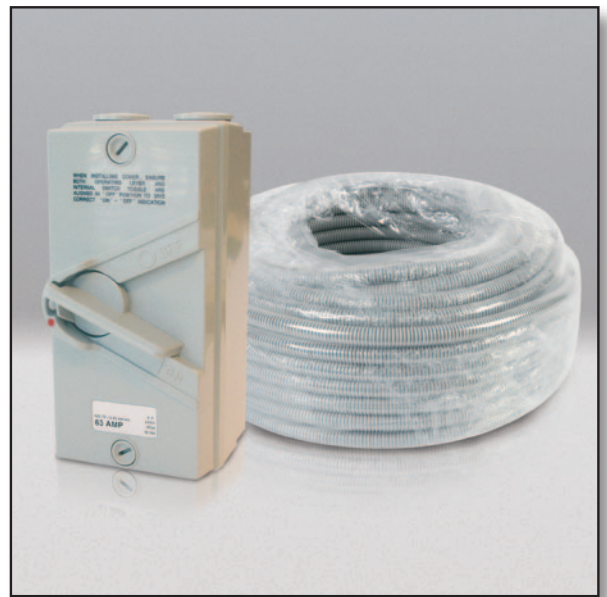
Product Description & Specifications:

Ideal for a complete installation pack for Air conditioning installers, Mechanical services contractors, etc.

Each pack comes complete with -

- 10 x 3 pole or 1 pole isolators in 32A or 63A
- 50M Roll of corrugated conduit
- 20 x fittings

Make your choice of the combination that you want.



C TYPE



D TYPE



G TYPE

Part no.	Description
CCS2020C	50M x 20mm hose + 20A 1 pole mini DNA isolator + clip lock fittings
CCS2032C	50M x 20mm hose + 32A 1 pole DNA isolator + clip lock fittings
CCS2032D	50M x 20mm hose + 32A 1 pole DNA isolator + Eureka CCF push in fittings
CCS2032G	50M x 20mm hose + 32A 1 pole DNA isolator + glue in fittings
CCS2063C	50M x 20mm hose + 63A 3 pole DNA isolator + clip lock fittings
CCS2063D	50M x 20mm hose + 63A 3 pole DNA isolator + Eureka CCF push in fittings
CCS2063G	50M x 20mm hose + 63A 3 pole DNA isolator + glue in fittings
CCS2532C	50M x 25mm hose + 32A 1 pole DNA isolator + clip lock fittings
CCS2532D	50M x 25mm hose + 32A 1 pole DNA isolator + Eureka CCF push in fittings
CCS2532G	50M x 25mm hose + 32A 1 pole DNA isolator + glue in fittings
CCS2563C	50M x 25mm hose + 63A 3 pole DNA isolator + clip lock fittings
CCS2563D	50M x 25mm hose + 63A 3 pole DNA isolator + Eureka CCF push in fittings
CCS2563G	50M x 25mm hose + 63A 3 pole DNA isolator + glue in fittings

Please contact your distributor for pricing details.

Distributed by:

N.A.W. Controls Victoria
98 Commercial Drive, Thomastown VIC 3074
Phone (03) 9464 6555 Fax (03) 9464 5155
Email sales@nawcontrols.com.au
www.nawcontrols.com.au

N.A.W. Controls Queensland
24/256 Musgrave Road, Coopers Plains QLD 4108
Phone 1300 NAW NAW Fax (07) 3272 7564
Email sales.qld@nawcontrols.com.au
www.nawcontrols.com.au

Tobin Electrical Components
2C Brunner Road, Chullora NSW 2190
Phone 1300 TOBINS, (02) 8713 5200 Fax (02) 9790 5211
Email sales@tobins.com.au
www.tobins.com.au

Switchgear Direct
38 McMillan Road, Echuca VIC 3564
Phone (03) 5484 3399 Fax (03) 5410 1044
Email sales@switchgeardirect.com.au
www.switchgeardirect.vpweb.com.au

Gordon Wood & Company
31 Sunderland Street, Moonah TAS 7009
Phone 03 6273 4455 Fax 03 6273 4734
www.gordonwood.net.au

Levey Agencies
2/6 Colin Jamieson Drive, Wickham NSW 2293
Warehouse Hours 8am-4pm
Phone (02) 4023 3844 Fax (02) 4023 3458
www.leveyagencies.com.au

Uniquip Industries
2/6 Colin Jamieson Drive, Welshpool WA 6106
Phone 08 9451 4782 Fax 08 9451 7057
Email sales@uniquip.net.au
www.uniquip.net.au

DNA PACKS

1 Part Number,
1 Price, 1 Bargain!

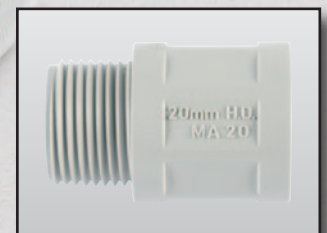
*Each pack contains 10 x DNA Isolators,
1 x 50m roll of hose and 20 x hose fittings.
All you have to do is pick the combination you want!*



D TYPE



C TYPE



G TYPE

- | | |
|-----------------------------------|-----------------------------------|
| <input type="checkbox"/> CCS2032G | <input type="checkbox"/> CCS2532D |
| <input type="checkbox"/> CCS2063G | <input type="checkbox"/> CCS2563D |
| <input type="checkbox"/> CCS2532G | <input type="checkbox"/> CCS2032C |
| <input type="checkbox"/> CCS2563G | <input type="checkbox"/> CCS2063C |
| <input type="checkbox"/> CCS2032D | <input type="checkbox"/> CCS2532C |
| <input type="checkbox"/> CCS2063D | <input type="checkbox"/> CCS2563C |

Code information:

2032 = 20mm hose + 32A 1P DNA
2063 = 20mm hose + 63A 3P DNA
2532 = 25mm hose + 32A 1P DNA
2563 = 25mm hose + 63A 3P DNA

G Type = APP glue-in fittings
D Type = EUR CCF hose fittings
C Type = APP clip lock fittings

*All packs come with
locknuts as required*

WHEN ORDERING, EG: CCS2563G = 1 X 50M ROLL OF 25MM HOSE, 10 X 63A 3P ISOLATORS, 20 X APP GLUE-IN FITTINGS.